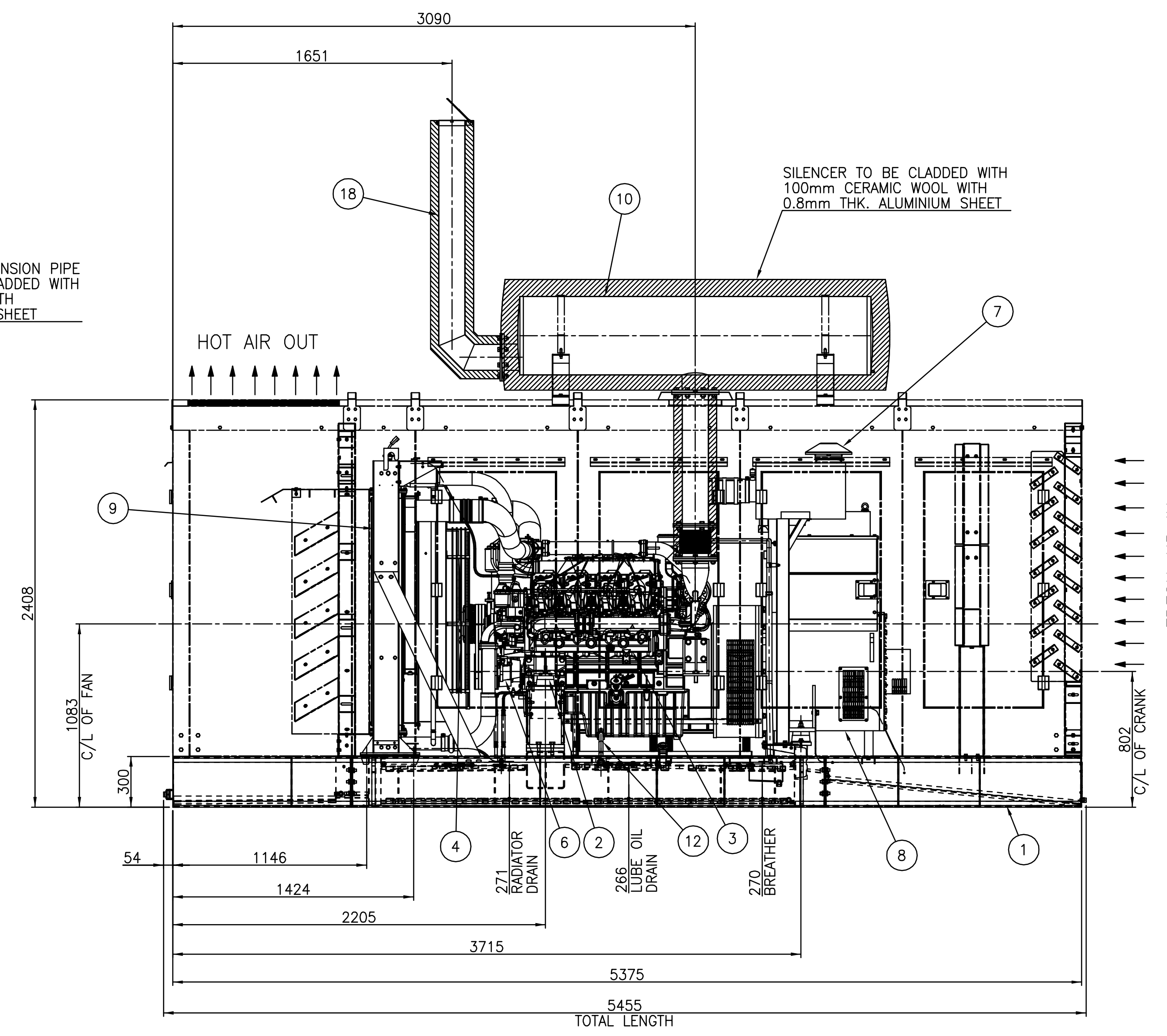
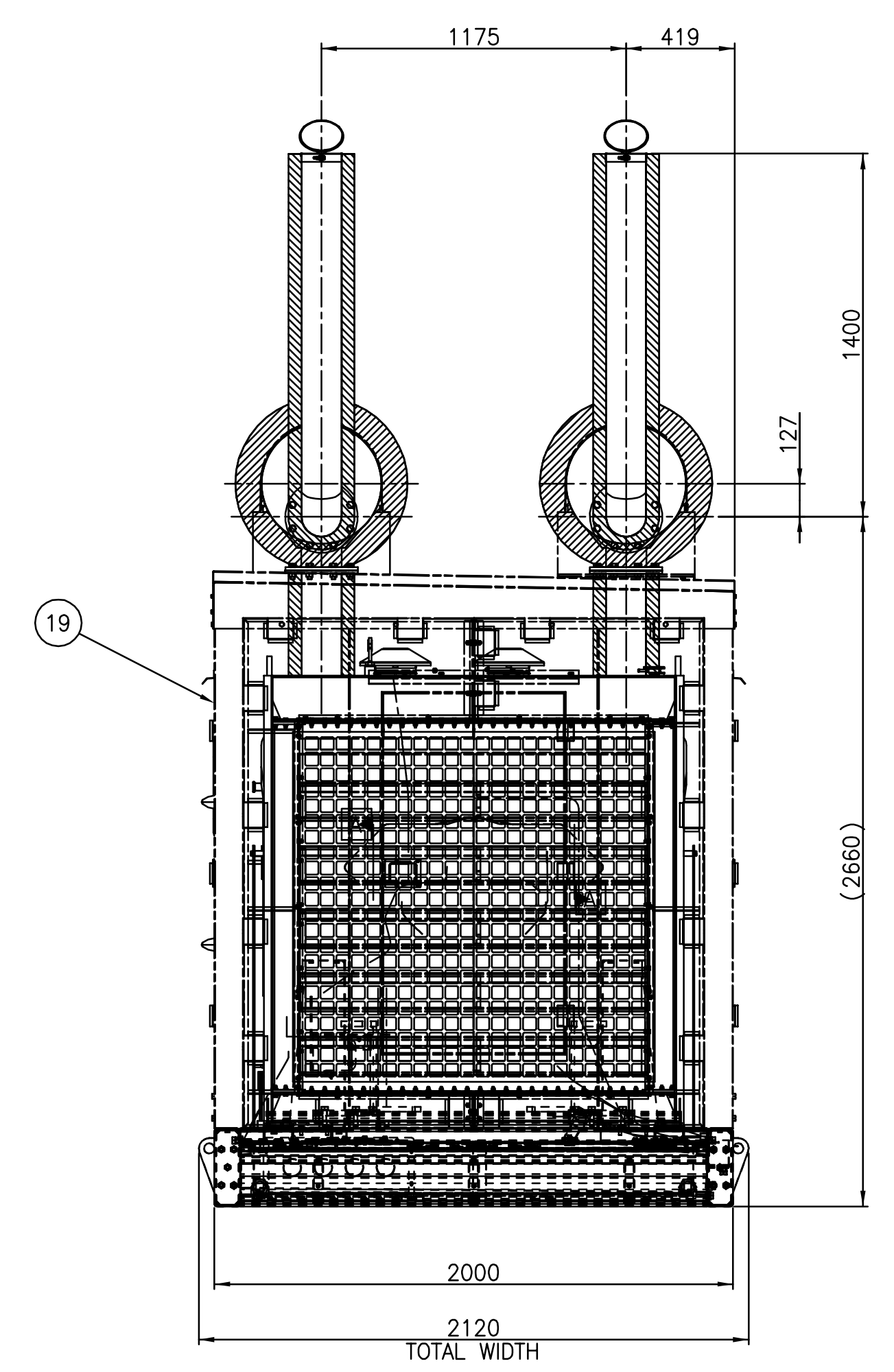


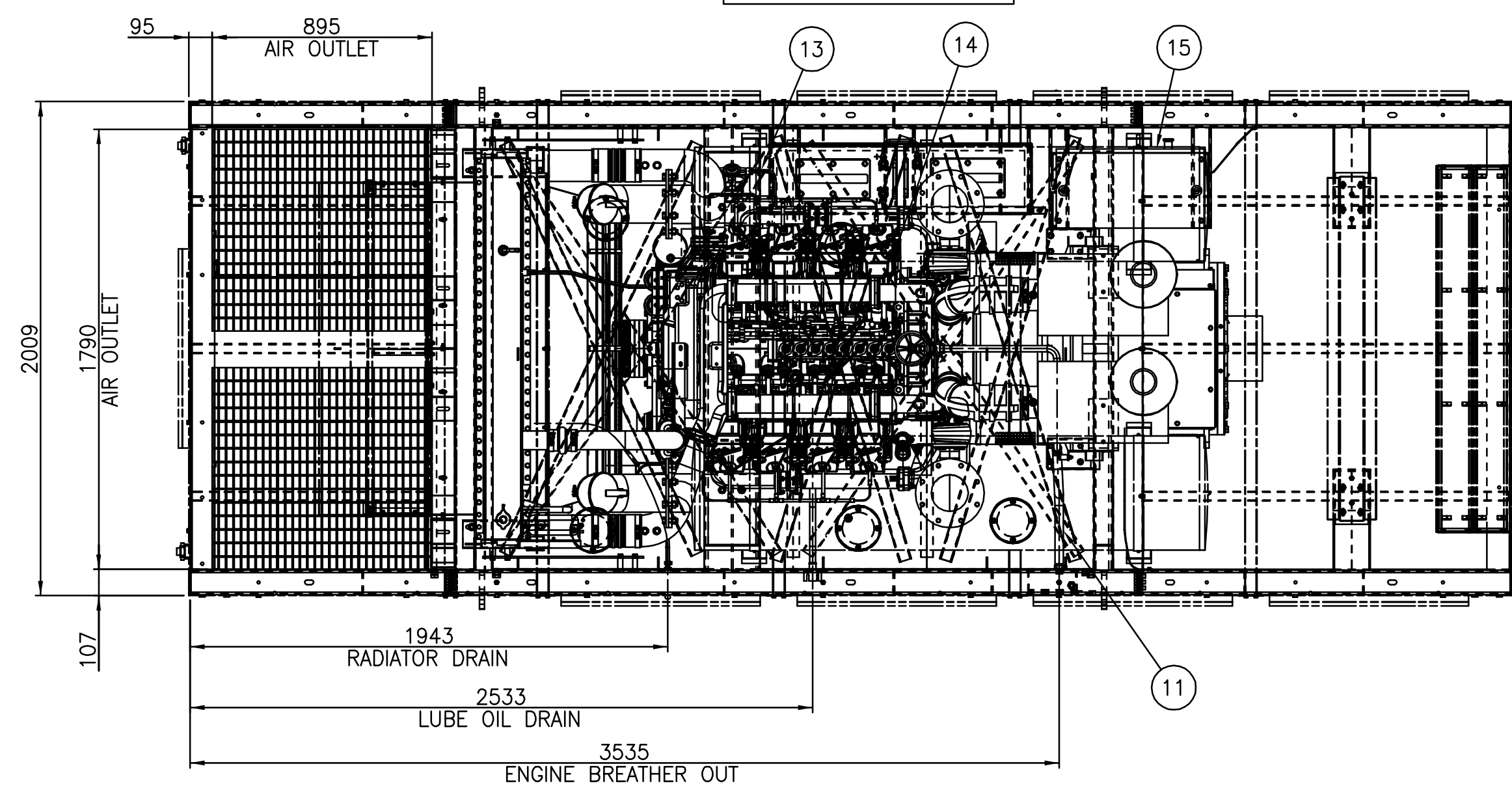
VIEW FROM ALTERNATOR SIDE



FRONT VIEW



VIEW FROM PULLEY END



TOP VIEW

|         |                                    |
|---------|------------------------------------|
| 19      | CANOPY ASSEMBLY                    |
| 18      | EXHAUST BEND                       |
| 17      | BATTERY AND BATTERY CABLE ASSEMBLY |
| 16      | EARTHING CABLE                     |
| 15      | CONTROL PANEL AND STAND            |
| 14      | FUEL LEVEL SENSOR                  |
| 13      | FUEL PIPING                        |
| 12      | LUBE OIL DRAIN ARRANGEMENT         |
| 11      | BREATHER ARRANGEMENT               |
| 10      | EXHAUST SYSTEM                     |
| 9       | COOLING SYSTEM                     |
| 8       | ALTERNATOR COUPLING                |
| 7       | AIR INTAKE SYSTEM                  |
| 6       | CHARGING ALTERNATOR ASSEMBLY       |
| 5       | STARTER ASSEMBLY                   |
| 4       | FAN AND MOUNTING                   |
| 3       | DV8 ENGINE ASSEMBLY                |
| 2       | AVM ASSEMBLY                       |
| 1       | BASE PLATE ASSEMBLY                |
| SR. NO. | DESCRIPTION                        |

- NOTES:-
1. OUTER DIMENSION-5455(L)x2120(W)x3020(H)
  2. DOOR HINGES - OUTSIDE
  3. PAINT- POWDER COATING FOR ALL CANOPY PANELS KOEL GREEN (IVORY)  
CANOPY TOP,BASE,TANK PEPSI BLUE POWDER COATING
  4. FOR DETAILS OF FOUNDATION LAYOUT AND INSTALLATION PLAN FOR OPEN DOORS REFER SHEET 2 OF 2.

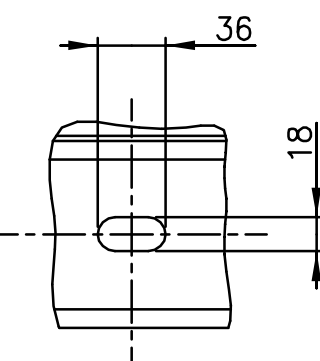
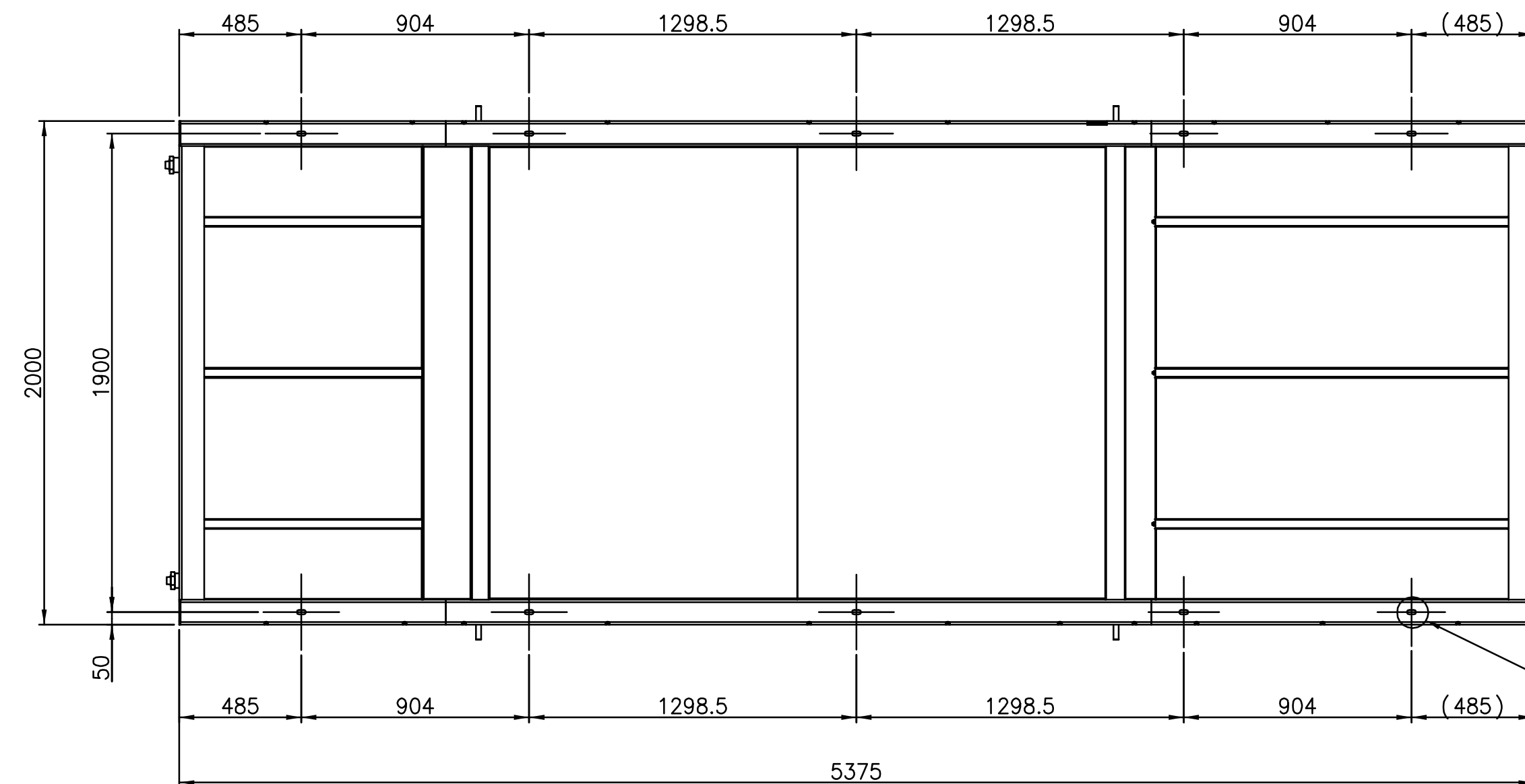
IF IN DOUBT ASK

PRINTS OF PREVIOUS REVISION NO. SHOULD BE SCRAPPED

THIS DRAWING IS PROPERTY OF KIRLOSOKAR OIL ENGINES LTD. AND MUST BE RETURNED ON REQUEST. IT IS SUBMITTED AS CONFIDENTIAL INFORMATION WITH OUR ENQUIRY, TENDER, ORDER OR CONTRACT NO. IT IS NOT TO BE ISSUED FOR ANY OTHER PURPOSE OR ORDER NOR MAY BE COPIED OR LENT WITHOUT OUR AUTHORITY IN WRITING.

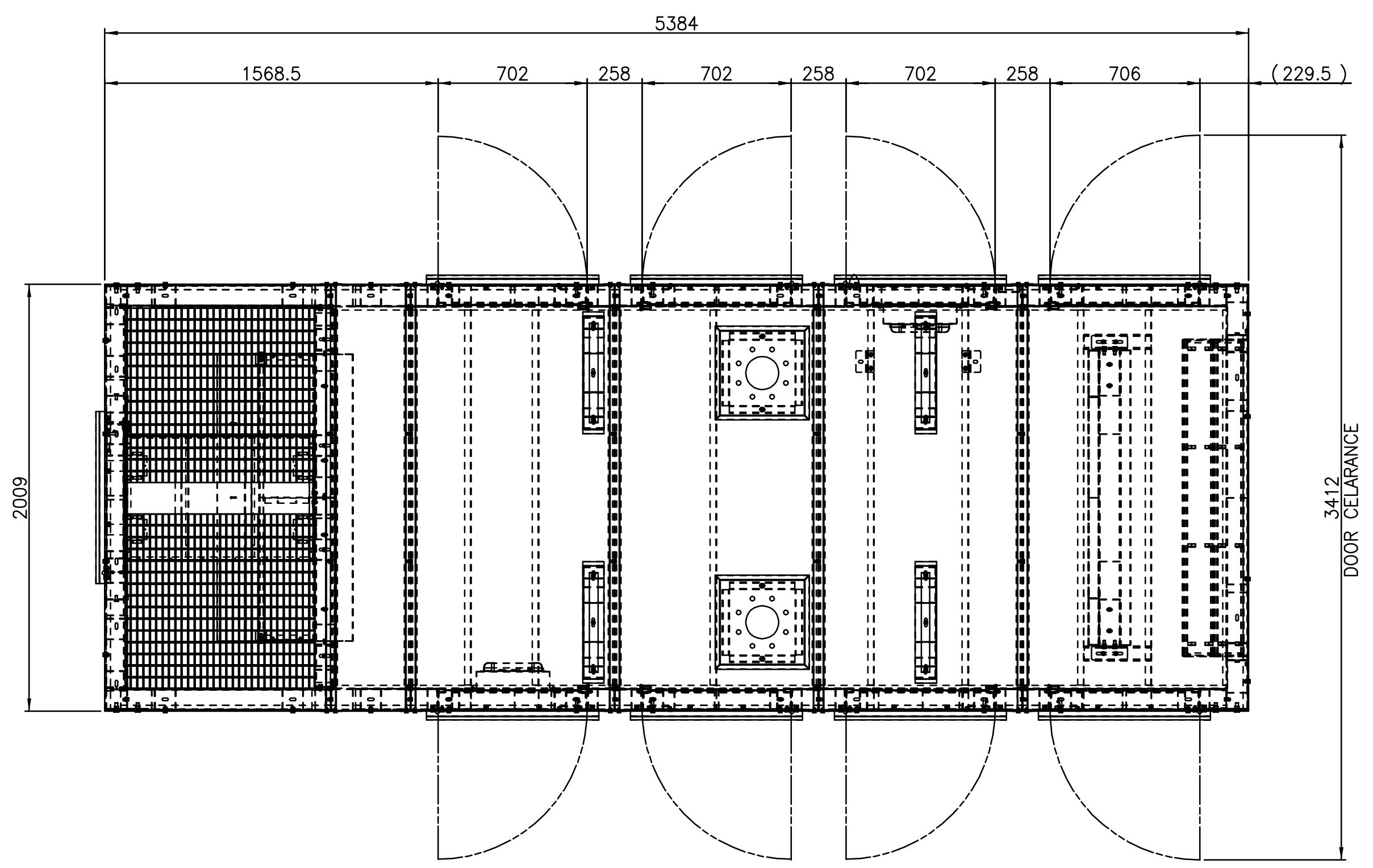
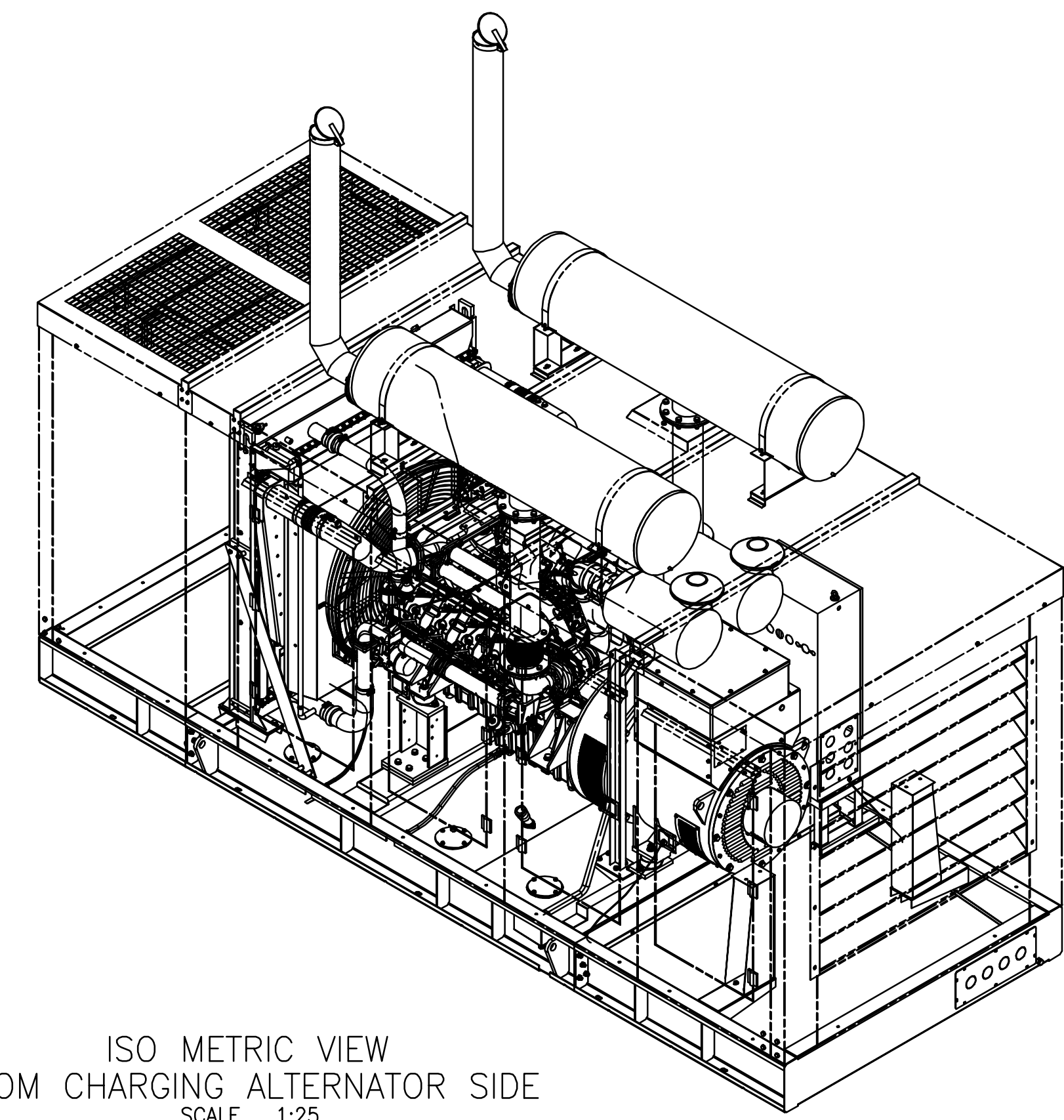
FORMAT No.R&E/FORM/056/01 (REFER DOP No. R&E 4.4/03)

|   |  |   |  |                            |  |
|---|--|---|--|----------------------------|--|
| UNLESS OTHERWISE SPECIFIED  |  | CAD DRG. FILE:- PLM                               |  | CASTING/FORGING DRG. NO.   |  |
| ● ALL DIMENSIONS ARE IN mm.<br>SURFACE ROUGHNESS AS PER CO. STD.NO.10501. |  | MATERIAL :- REFER BOM                             |  | HEAT TREATMENT :-          |  |
| ● UNMENTIONED TOLERANCES AS PER CO.STD.NO.11001.                          |  | DRN HARESH  |  | WEIGHT (kg) :-             |  |
| ● REMOVE ALL SHARP BURRS AND SHARP EDGES.                                 |  | CHD. PAT  |  | TYPE DV8                   |  |
| ● DRAWING NOT TO BE SCALED.   |  | APPD. JGJ   |  | SCALE 1:20                 |  |
| UNMENTIONED   |  | DATE 22/05/2014                                   |  | SHT. NO 1 OF 2             |  |
| RADI ---  |  | TITLE GENSET INSTALLATION                         |  | DRAWING NO. DV8.5207.00.00 |  |
| CHAMFER ---   |  | 380KVA  |  | REV. NO. 00                |  |
| UNDERCUT ---  |  | KIRLOSOKAR OIL ENGINES LTD., PUNE 411 003 (INDIA) |  | SIZE A                     |  |
| LIFECYCLE STATE:- RELEASED  |  |   |  |                            |  |

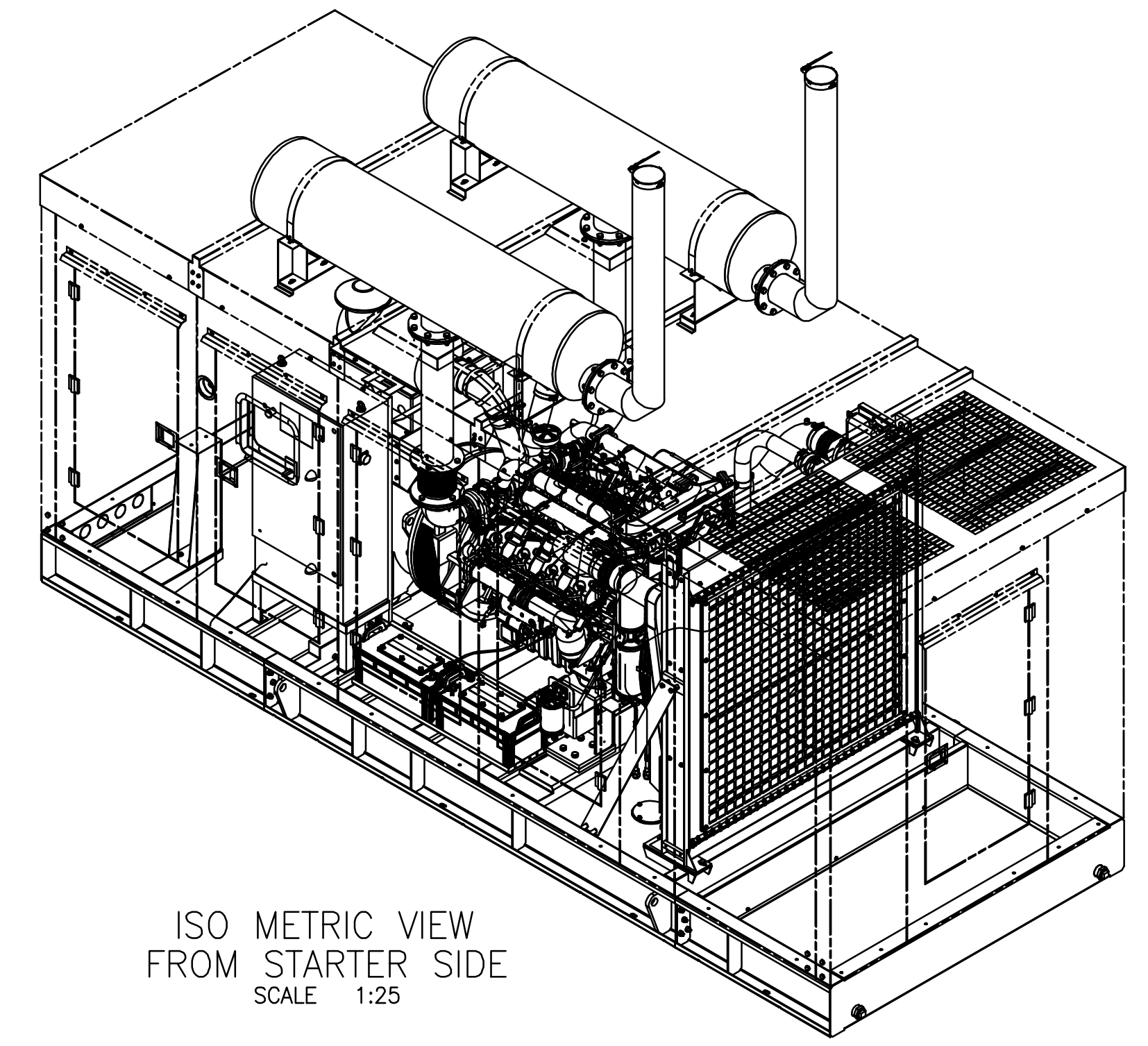


SEE DETAIL A

FOUNDATION LAYOUT



INSTALLATION PLAN FOR OPEN DOORS



IF IN DOUBT ASK

PRINTS OF PREVIOUS REVISION NO. SHOULD BE SCRAPPED

THIS DRAWING IS PROPERTY OF KIRLOSKAR OIL ENGINES LTD. AND MUST BE RETURNED ON REQUEST. IT IS SUBMITTED AS CONFIDENTIAL INFORMATION WITH OUR ENQUIRY, TENDER, ORDER OR CONTRACT NO. IT IS NOT TO BE ISSUED FOR ANY OTHER PURPOSE OR ORDER NOR MAY BE COPIED OR LENT WITHOUT OUR AUTHORITY IN WRITING.

FORMAT No. R&E/FORM/056/01 (REFER DOP No. R&E 4.4/03)

|   |          |  |             |                            |     |          |      |             |               |
|---|----------|--|-------------|----------------------------|-----|----------|------|-------------|---------------|
| UNLESS OTHERWISE SPECIFIED                          |          | CAD DRG. FILE:- PLM                              |             | CASTING/FORGING DRG. NO.   |     |          |      |             |               |
| ● ALL DIMENSIONS ARE IN mm.                         |          | MATERIAL :- REFER BOM                            |             | HEAT TREATMENT :-          |     |          |      |             |               |
| ● SURFACE ROUGHNESS AS PER CO. STD. ISO 1001.       |          | DRN HARESH                                       |             | WEIGHT (kg) :-             |     |          |      |             |               |
| ● UNMENTIONED TOLERANCES AS PER CO. STD. ISO 11001. |          | CHD. PAT   |             | TYPE DV8                   |     |          |      |             |               |
| ● REMOVE ALL SHARP BURRS AND SHARP EDGES.           |          | APPD. JGJ  |             | SCALE 1:20                 |     |          |      |             |               |
| ● DRAWING NOT TO BE SCALED.                         |          | DATE 22/05/2014                                  |             | SHT. NO 2 OF 2             |     |          |      |             |               |
| UNMENTIONED   |          | TITLE GENSET INSTALLATION                        |             | DRAWING NO. DV8.5207.00.00 |     |          |      |             |               |
| RADI ---  |          | 380KVA   |             | REV. NO. 00                |     |          |      |             |               |
| CHAMFER ---   |          | KIRLOSKAR OIL ENGINES LTD., PUNE 411 003 (INDIA) |             | REV. NO. 00                |     |          |      |             |               |
| UNDERCUT ---  |          |  |             |                            |     |          |      |             |               |
| 00 NEW RELEASE                                      |          | DNE2241 22.05.2014                               |             |                            |     |          |      |             |               |
| No.   | REVISION | ZONE   | MODIFIED BY | REF. No. DATE              | No. | REVISION | ZONE | MODIFIED BY | REF. No. DATE |

LIFECYCLE STATE:- RELEASED